



MILLER VALLEY EVENT SPACES

Celebrate Responsibly®



HISTORIC MILLER CAVES

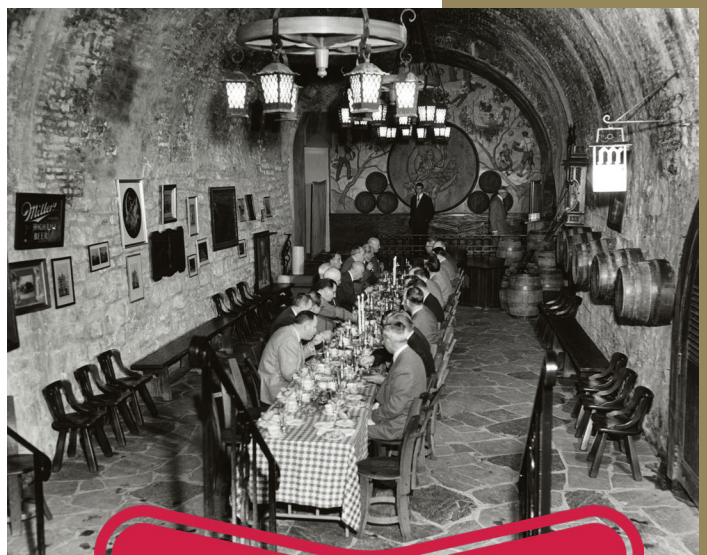
CAPACITY | 40 guests seated or 75 guests standing

AVAILABILITY | Thursday-Monday evenings only (due to tour operations)

*Please note, the historic caves area currently has no ADA accessibility.

Construction of these caves began in 1849, making them the oldest surviving structure at our brewery. At one time, we had 10 caves of similar size used to house up to 12,000 oak barrels of brew. Large blocks of ice taken from area lakes and rivers each winter kept the caves cool enough to store beer all year long.

The caves were abandoned in 1906 and remained closed until the early 1950's, when they were reopened and turned into a museum and event space.



FUN FACT

In spring of 2024, The Caves were featured in an episode of Top Chef!

MILLER INN | STEIN HALL

CAPACITY | 80 guests seated

AVAILABILITY | Thursday-Monday evenings only (due to tour operations)



In 1892, the Miller family built a new wooden tavern to replace the original Plank Road tavern. These taverns were where beer flowed freely, and brewery workers and residents relaxed and enjoyed their Miller Beer.

In the 50's, the building was renovated into this Bavarian style beer hall, complete with custom stained-glass windows and Steins imported from Germany. Plank floors were installed to cover an old bowling alley, which still exists under there. Once completed, the Miller Inn became a social gathering place for Milwaukee residents and celebrities.

FUN FACT

Our largest stein is a ceremonial wedding stein that weighs 75 lbs!



MILLER INN | CHAMPAGNE & HIGH LIFE ROOM



CHAMPAGNE ROOM

The Miller Inn, as it is called now, was originally opened as a commercial tavern, but it was eventually leased to Innkeepers who lived upstairs and converted areas on the first level into guest rooms, some with barracks-style beds.

In the 50's our founder's grandson, Frederick C. Miller, wanted a hospitality space and had the Inn renovated into this Bavarian style beer hall, complete with custom stained-glass windows and Steins imported from Germany.



HIGH LIFE ROOM

CHAMPAGNE ROOM CAPACITY

45 guests seated

HIGH LIFE ROOM CAPACITY

60 guests seated

AVAILABILITY

Thursday-Monday evenings only
(due to tour operations)

*Please note, the Champagne and High Life Rooms currently have no ADA accessibility.

VENDOR RESOURCES

CATERERS

SAZ'S

Jaime Peterson, 414.256.8765
jaime@sazs.com
www.sazs.com

SHULLY'S CUISINE

Nina Darling, 262.242.6633
ndarling@shullyscuisine.com
www.shullyscuisine.com

SKYLINE CATERING

Ernest Wunsch, 414.294.4808
ernie@skylinecatering.com
www.skylinecatering.com

FROM SCRATCH CATERING

262.618.4661
corporateevents@fromscratchcatering.com
www.fromscratchcatering.com

IRENE'S CATERING

414.645.4469
irenescatering@msn.com
www.irenescatering.com

LARRY'S MARKET

414.355.9650
info@larrysmarket.com
www.larrysmarket.com

TALL GUY & A GRILL

Erica Westfahl, 414.777.0770
erica@brazenstandard.com
www.brazenstandard.com

AUDIO | VISUAL

EXCITING EVENTS

262.797.8880
sales@excitingevents.com

SOUND BY DESIGN

Torie Gamez, 262.968.9586
torie@soundbydesign.com
www.soundbydesign.com

MILWAUKEE AIRWAVES

262.510.8366
events@milwaukeeairwaves.com
www.milwaukeeairwaves.com

LINENS & RENTALS

WINDY CITY LINEN

224.279.1500
www.windycitylinen.com

BBJ LINEN

866.376.4755
www.bbjlatavola.com

CANOPIES

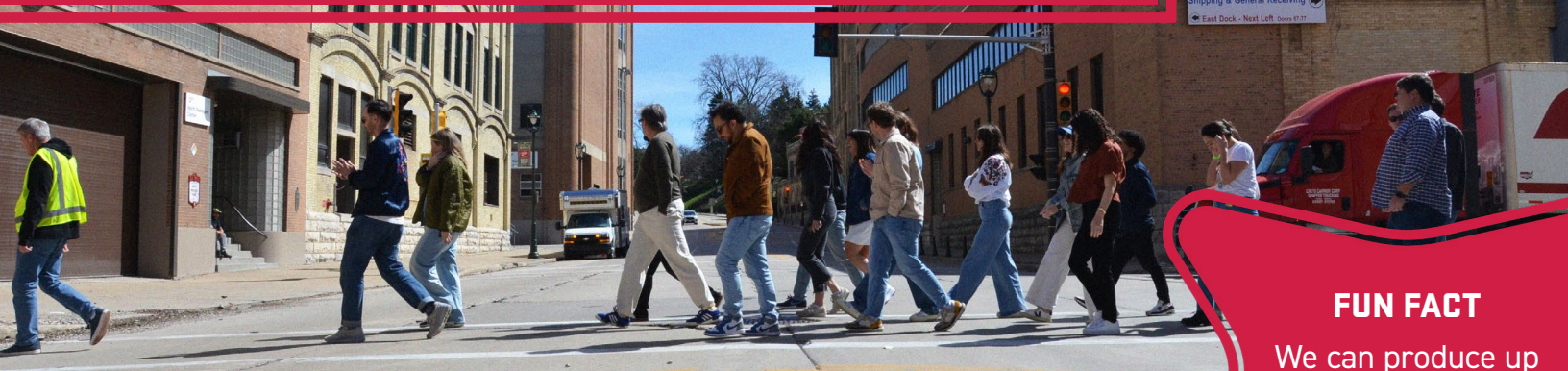
414.760.0770
www.canopiesevents.com

HOTEL

BREWHOUSE INN & SUITES

877.504.1713
www.brewhousesuites.com

BREWERY TOURS



FUN FACT

We can produce up to 600,000 cases of beer daily

ADD TO YOUR EVENT AT MILLER VALLEY WITH A BREWERY TOUR!

Take a step back in time and learn first-hand how we brew, package and distribute all our fine quality products. Our tours begin with a beer because... why not? We will immerse your senses as we take you back in time to our famous underground caves and historic Miller Inn. Then you rejoin us in the 21st Century as we move on to our modern operations including our Brew House, Packaging and Distribution Centers.

MORE INFO & TOUR TICKETS | www.millerbrewerytour.com
TOURS | Thursday-Monday | 10:30-3pm

PRIVATE AFTER-HOUR TOURS | available 3:30pm - 5:00pm
PRICING | \$20/person + applicable taxes and fees



FAQS

Where would I park for my event?

For any of our event spaces, you can park in the free lot adjacent to the Miller Visitor Center. Events in the Caves or the Miller Inn will be a few blocks east of the lot. The address for the lot is 4251 West State Street, Milwaukee, WI 53208.

How do I get to the event space?

If you're traveling on I-94, take the exit to WI-175 N. Then take the State St/Vliet St exit. Turn right onto N 46th St, then left onto W State St. The Miller Visitor Center parking lot will be on your right (south side of the street).

How much beer can we drink during the event?

At Miller Brewery, we value celebrating responsibly. Those who are of legal age will be able to enjoy 3-4 beverages. We will need to ensure any guest drinking an alcoholic beverage is of legal age.

What sort of beverages will I be able to have at the event? Can I bring in my own?

In our event spaces, we serve Molson Coors (MCBC) beverages only. Typically, this will include Miller Lite, Miller High Life, Coors Light, Blue Moon, as well as seasonal Leinenkugel's beers and hard seltzers. No outside beverages are allowed to be brought in for your event.

Can minors at my event drink alcohol if their parent or guardian is present?

No. Our company policy is that all guests need to be 21+ to enjoy our alcoholic beverages.

What days of the week can I reserve the space? How long would I have it?

Our event spaces are available Thursday through Monday for a three-hour timeframe between 5-9pm.

What sort of AV capabilities do you have?

Our rooms in the Miller Inn come with a microphone, pull-down screen, and projector. The remaining spaces have limited AV available.

Can I bring in my own amps for music?

No. Our event spaces are in a residential area, and we want to respect our neighborhood by limiting any noise pollution.

How do I pay for my event?

Payments can be made via credit card. A 20% down-payment is required to book the event date. Full payment must be made no later than 30 days prior to the event date.

Who do I contact if I have any questions?

Please contact us by emailing millerevents@millerbrewerytour.com or by filling out an inquiry on our website.

PRICING

LOCATION	TIME AVAILABLE	CAPACITY	STANDARD RATE	SATURDAY RATE
CAVES	5-9PM	40 seated 75 standing reception	\$1,850	\$2,250
STEIN HALL	5-9PM	80 seated	\$1,200	\$1,600
CHAMPAGNE ROOM	5-9PM	45 guests	\$850	\$1,250
HIGH LIFE ROOM	5-9PM	60 guests	\$1,000	\$1,400
CAVES & STEIN HALL	5-9PM	Caves & Stein Hall	\$2,350	\$2,750
FULL MILLER INN	5-9PM	Stein Hall, Champagne & High Life Rooms	\$1,700	\$2,100
CAVES & FULL MILLER INN	5-9PM	Caves, Stein Hall, Champagne & High Life Rooms	\$3,000	\$3,400

**Guest count depends on event type.